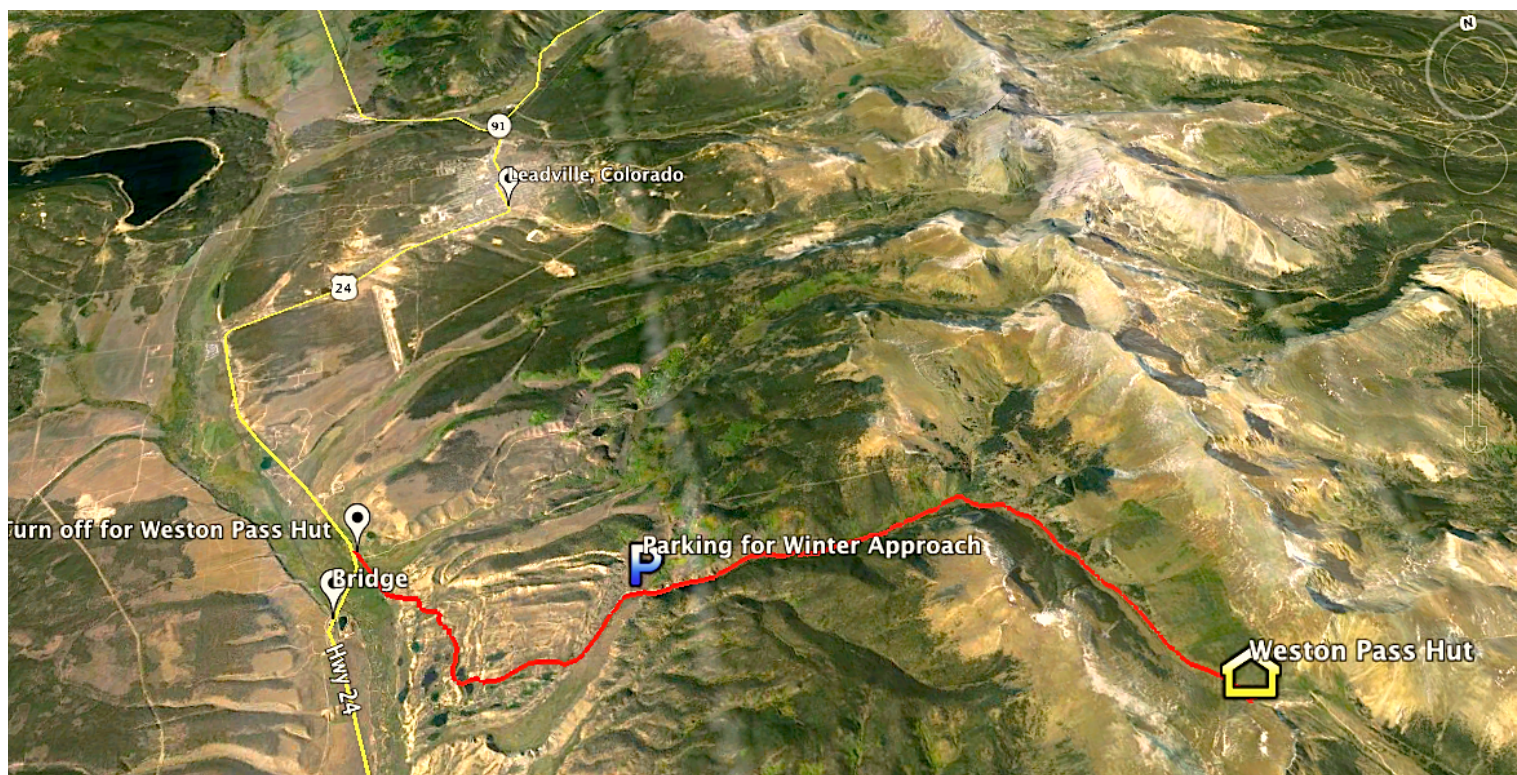




Winter Trip Information Packet¹

Directions to Parking for Winter Approach

From Leadville, CO take US-24 East. Continue on US-24 East for ~7.5 miles. Then turn left onto Co Rd 10/Co Rd 7. (If you cross over the bridge over the railroad tracks on US-24 then you have missed the turnoff for Co Rd 10/Co Rd 7.) Continue on Co Rd 10/Co Rd 7 for 4.2 miles after the US-24 East junction. At about 4.2 miles, the parking for Weston Pass Hut will be on left side of the road. The parking lot sits at the mouth of canyon. Across the road from the parking lot is a private driveway. We ask that guests do not block or park in the private driveway.

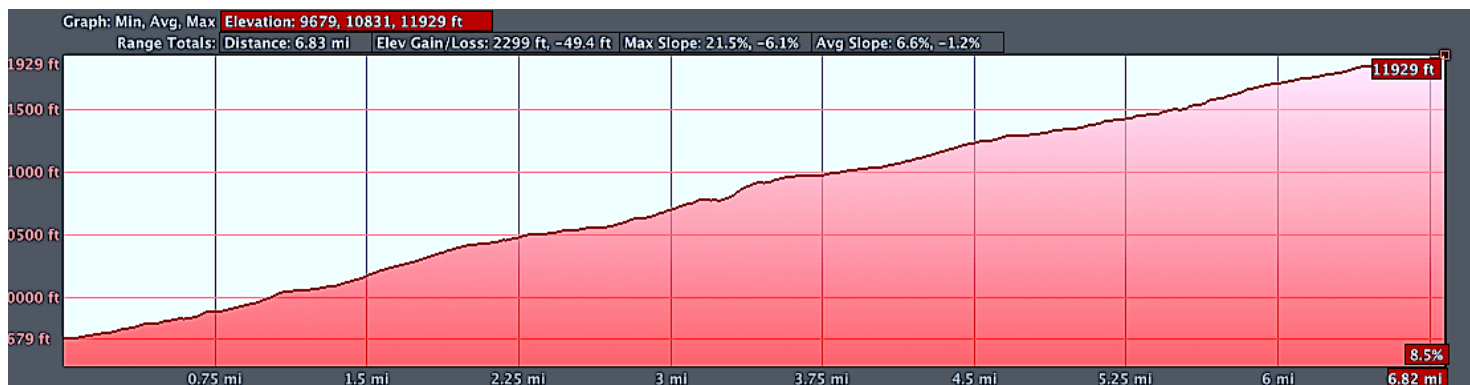


¹ For summer trip information please download the "Summe Trip Information Packet" available on our website.
WE STRONGLY ENCOURAGE GUESTS TO PRINT THIS PACKET AND TAKE IT WITH THEM TO THE HUT.



The approach

In the winter, getting to Weston Pass Hut is a strenuous but awarding adventure. It is best practice that you or someone in your party has backcountry skiing experience before embarking on this trip. From the designated parking lot, the trek is 6.78 miles with a total altitude gain/loss of ~2,400 feet (see elevation profile below). The altitude at the trailhead is 9,698 feet and the altitude of the hut is 11,950 feet. The map of the trek from the Lake County side can be found in the section below. For those using GPS devices, the coordinates of the Hut are 39.130250, -106.188222. The grade of the trail is moderate with a constant uphill climb and a lot of weather exposure. Given the chance of windy and extreme weather, the trail may be covered in deep powder. But it is also often windblown and parts might even require carrying skis and hiking. We advise getting an early start so that you can arrive at the hut



before sunset.

The hut can be accessed by snowmobile and other snow vehicles. Previous experience operating these vehicles is highly advisable.

Pets

Unfortunately, we are currently not allowed to host customers' pets (including dogs) at the hut because of our Conditional Use Permit Agreement.



Sleeping Options

Weston Pass Hut has a maximum overnight occupancy of 20 people. Our floor plan offers four rooms (up to 4 persons/room) and additional sleeping options in the common area. The bedding options are provided on a first come first serve basis. Please be sure to arrive at the hut early if you have a preferred sleeping arrangement in mind.

The Weather

Please check the forecast prior to departure. The weather on the trek to the Hut and at the site can be fickle, varying substantially day-to-day and even within a given day. Be sure to pack for extreme weather conditions regardless of the season. The climate on Weston Pass is very different from the weather in Leadville and the surrounding areas. The site has beautiful, calm sunny days, but it also has cold windy days. Winds at the site can exceed 50 miles per hour, in the summer and winter time. In the winter, the temperature regularly dips well below 0°F. For winter trips, please be prepared for harsh snow conditions that can severely limit visibility.

Water

The hut does not provide water. Please be sure to pack enough water for the approach. When at the hut melting snow for drinking water is common practice.

Trip Leader

Each group should be accompanied by a trip leader who has extensive backcountry experience. This trip leader should be experienced in wilderness first aid. The leaders should also have experience in avalanche rescue and be able to evaluate snow conditions.



Booking and Liability

When a person books a trip for a group, this person must accept a Waiver and Liability Release agreement. The person who books the trip is responsible for getting every member of their group to submit a Waiver and Release agreement, and is also responsible for paying for unpaid nights of any member in the group. The person who books the trip, will agree to indemnify Leadville Backcountry, Phase II, LLC for any liability for injuries, paralysis or death to any member of his/her group who does not sign a Waiver and Release Agreement.

Phone Communication

There is not cell phone coverage at the hut, nor is there cell phone coverage on the trek to the hut. Cell phones are great to use as cameras on your trip, but they will not serve as means of communication. Recognize that communication with emergency services and people who are not on the trip will be limited, and plan accordingly.

Emergencies and Emergency Contacts

Since there is no cell phone coverage at the hut, please make individuals who are not staying at the hut aware of your travel plans and when you expect to return. If there is an emergency, then you will need to find cell phone coverage at the base of the pass. Please write down the following numbers, distribute them to every member in your party, and to individuals who are not staying at the hut but know your travel plans.

Emergency Dispatch: 911
Lake County Sheriff's Office: (719) 485-1249
Park County Sheriff's Office: (719) 836-4121, Option 5
Weston Pass Hut Business Number: (719) 293-1215
Weston Pass Hut Emergency Number: (970) 409-9870



Amenities Provided at the Hut

Cooking

- Wood Cooking Stove and Oven
- Propane burners for cooking
- Pots and Pans
- Silverware, Knives, Can Opener
- Corkscrew
- Cutting Boards
- Glasses and Mugs
- Dishwashing Amenities
- Plates and Bowls
- Pot for Melting Snow
- Indoor Dining Table
- Outdoor Picnic Table
- Salt and Pepper
- Cooking Oil
- Wine Glasses

Bedding and Comfort

- Foam Mattresses and a Washable Covering
- Pillows
- Wood Burning Heating Stove
- Wood for Fire and Cooking
- Solar-Powered Lights

Entertainment and Information

- Board Games
- Small Selection of Books
- Maps and Information about the Area

Bathroom Amenities

- Two Outhouses
- Toilet Paper
- Hand Sanitizer



Gear Checklist²

Essential Gear

- ☐ Food (and snacks for the approach)
- ☐ Water, Water Bottles or hydration system (insulated)
- ☐ Headlamp with New Batteries
- ☐ Appropriate clothing: jacket, vest, base-layers, snow pants, gloves, hat, wool socks
- ☐ Warm Sleeping Bag: The bag should have rating of at least zero degrees, and warmer bag is better.
- ☐ Sunglasses or Goggles: Goggles will improve visibility and enhance comfort in heavy snowstorms
- ☐ Comfortable, well-fitted backpack
- ☐ Toiletries
- ☐ Equipment for approach
 - ☐ Backcountry Skis and Poles
 - ☐ Climbing Skins for Backcountry Skis
 - ☐ Or Snowshoes and Poles
 - ☐ Or Snowboard, Snowshoes, and Poles
 - ☐ Snowmobile
- ☐ First Aid Kit including NSAIDs or Aspirin, moleskin for blisters
- ☐ Compass
- ☐ Map of Weston Pass Area

Recommended Gear

- ☐ Avalanche Safety Equipment
 - ☐ Avalanche Shovel
 - ☐ Avalanche Beacon
 - ☐ Avalanche Probe Poles
- ☐ Duct tape
- ☐ Multitool or knife
- ☐ Gear repair kit

Additional Optional Gear and Supplies

- ☐ Camera or Cellphone with Camera
- ☐ Binoculars
- ☐ Hot Beverages (Coffee, Tea, Hot Chocolate)
- ☐ Ski Sled as an Alternative to Pack
- ☐ GPS
- ☐ Down Booties
- ☐ Lip Balm
- ☐ Extra Batteries
- ☐ Handwarmers
- ☐ Extra socks
- ☐ Two-way radios
- ☐ Balaclava or facemask
- ☐ Notepad and pencil
- ☐ Earplugs (for sleeping)

² When packing please keep in mind that backcountry access is more enjoyable when you're carrying a light load. We strongly suggest packing all the essential gear, but try to save weight where possible.

